

# Idiom Wines Bouldering



Last update: 16 November 2019

# 1 About Idiom Wines

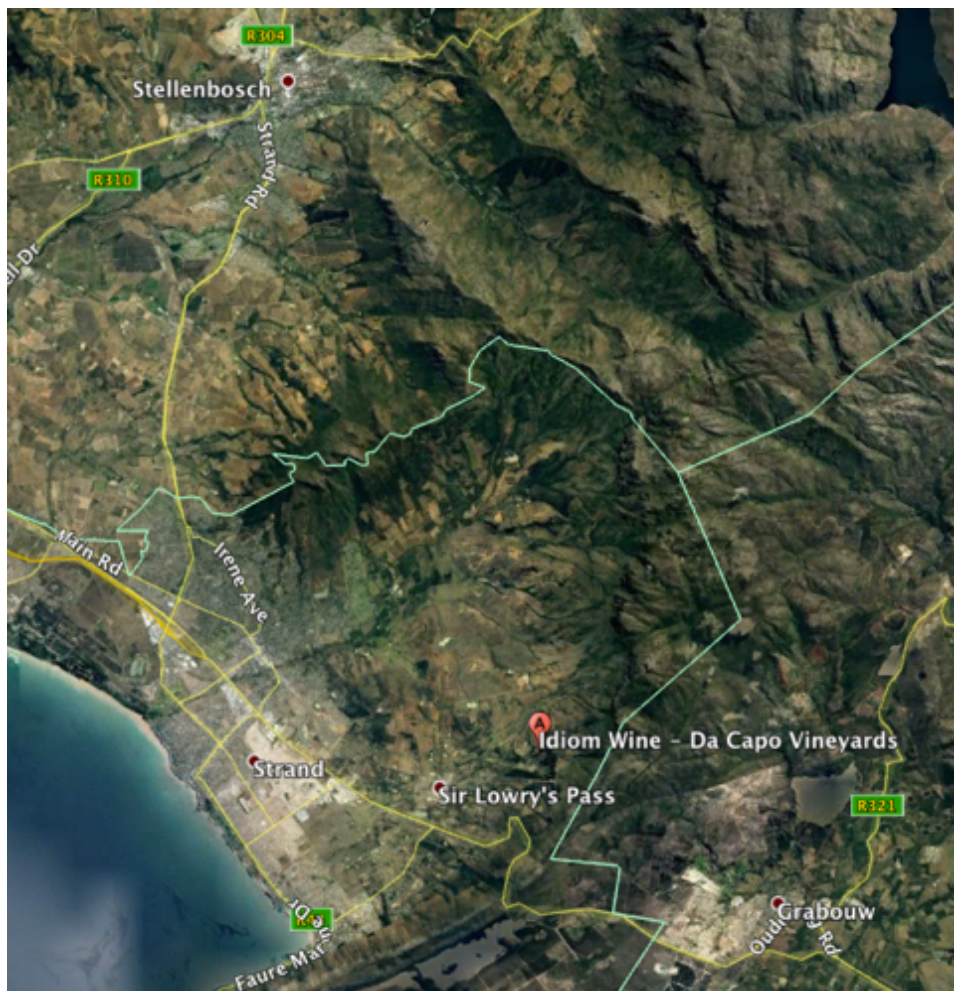
Idiom wines is a privately owned wine farm that has agreed to give access to [MCOSA members](#) and [Maties Climbing](#) members for development respectively. They are situated on the foot of Helderberg.

## 2 Rules

- Please keep the place clean
- Don't pick the grapes.
- Cleaning up of boulder problems are welcomed

## 3 Location

### 3.1 MAP



You can find them on Google Maps here: [Idiom Wines](#).

GPS Location: 34°06'17.0"S, 18°56'26.1"E (-34.104711, 18.940576)

Please park at the dedicated parking spot and hike as needed. If you have a car that is capable you may drive closer to the higher area.

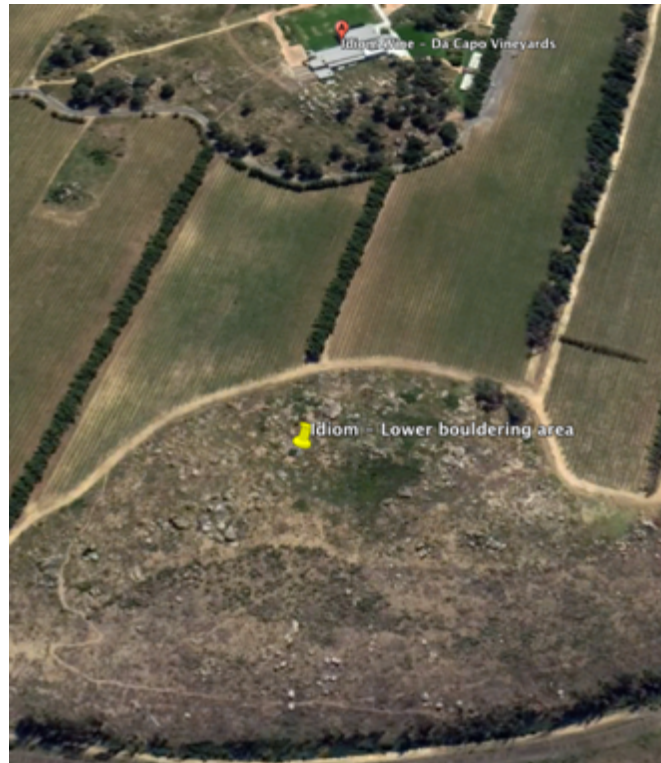


## 4 Areas

There are two main areas of bouldering. The one is very close to the parking lot. The other is a bit up the hill

### 4.1 LOWER AREA

GPS location: 34° 6'26.21"S, 18°56'25.33"E



### 4.2 UPPER AREA

GPS location: 34° 6'7.52"S, 18°56'48.37"E



# 5 Routes

## 5.1 DESCRIPTION

The boulders are mostly very featured granite with a lot of potential. They are quite rough which makes the friction great.

## 5.2 LOWER AREA ROUTES

This section has very little routes developed and is a relatively small area. Please open up new lines here if you are exploring. See section 6: Development.



**Photo 1. Dominic Huskisson on The Wine Fridge (5b)**



### 5.3 UPPER AREA ROUTES

This is quite a large area and has not been subdivided into smaller manageable chunks to navigate. So, at this point in time, just explore!



Photo 2. Some boulders in the upper area.

#### 5.3.1 Tee-iffany's boulders

##### Crack at Tee-iffany's (6a).

Start in the thin T-crack and climb up. F.A. Sebastian Mörbel (2019)



Photo 3. Crack at Tee-iffany's

**From Rusk Till Dawn (6a).**

Climb up to the crack, traverse left and finish up with good holds. Avoid the big fragile flake. F.A. Tim Söngen (2019)



**Photo 4. From Rusk Till Dawn**

**Gottesanbeterinenklaue (5b).**

Sit start to the right of the base of the high pillar on the back side of Tee-iffany's. Climb up the praying mantis claws marks and end slightly to the left for the top out. F.A. Oan de Waal (2019).



**Photo 5. Gottesanbeterinenklaue**



### 5.3.2 Cracked Egg Boulder boulders



**Photo 6. Cracked Egg Boulder. Eggcellent (left), Brake Fast (right)**

#### **Eggcellent (6a)**

Climb the arête by staying left on the face. F.A. Oan de Waal

#### **Brake Fast (5a)**

Climb up on good holds. F.A. Oan de Waal



**Photo 7. Eggcellent**



**Photo 8. Brake Fast**



**Photo 9. Dominic Huskisson on  
A Touch of Sun (6a).**



**Photo 10. Open Project**





**Photo 11. Open Project**



**Photo 12. Open Project**

# 6 Development

## 6.1 ETHICS

At this point it's free for all, just open routes and log them. It would be great if you can stick with the theme of the area – *idioms, wines and puns*.

## 6.2 NEW ROUTES

If you open up a route, send the name, grade, photos and description of the routes to [aan.dewaal@gmail.com](mailto:aan.dewaal@gmail.com). See the photo specifications below.

## 6.3 PHOTO SPECIFICATIONS

Please take quality photos and send them in full resolution. I will resize it to fit the document. There are a couple of photo types that you should email.

1. Sending photo – you on the problem (you can pose afterwards)
2. Photo of the problem (clean) – to show the line
3. Photo of the problem (with a drawn in arrow) – to indicate where it goes.

Not all your photos might be used, but it's great to have options to show in the guidebook.